

Fw: Invitation to the 9th Young ASEAN Leaders Policy Initiative 2025 (YALPI)

Rungkarn Pongpopithak <rungkarnpo@nu.ac.th>
ร่างจดหมาย

จาก: YALPI Chulalongkorn University <yalpichula@gmail.com>
ส่ง: 2 ธันวาคม 2567 13:09
ถึง: naresuan <naresuan@nu.ac.th>
ชื่อเรื่อง: Invitation to the 9th Young ASEAN Leaders Policy Initiative 2025 (YALPI)

คุณไม่ได้รับอีเมลจาก yalpichula@gmail.com บ่อยนัก เรียนรู้ว่าเหตุใดสิ่งนี้จึงเป็นสิ่งสำคัญ

Dear Coordinator of, Naresuan University

On behalf of the Young ASEAN Leaders Policy Initiative Organizing Committee, we would like to cordially invite interested students at your institution to the 9th Young ASEAN Leaders Policy Initiative 2025 (YALPI), which will be held in Bangkok from. 4th February – 7th February 2025 under the theme “ASEAN’s Future as an AI Hub: Inclusive Policies for a Thriving Digital Economy.”

Young ASEAN Leaders Policy Initiative (YALPI) is an international forum that gathers and empowers youths to solve current social issues with a bottom-up approach. Dedicated to bringing youths’ vision into reality, YALPI works with scholars and experts in each year’s interested fields to equip our delegates with useful information and guidelines.

To facilitate your students’ application for YALPI 2025, we would like to seek your kind cooperation in sharing this opportunity on various channels, be it your Facebook, your Instagram fanpage, your on-campus printed announcement or your direct emailing to students. To make the process smoother for you, we have attached our call-for-application graphic, along with our delegate recruitment form so that your social media content can be customized.

Please note that the application period ends on **15th December 2024**. Interested students are highly encouraged to follow us on social media for the most up-to-date information and announcement. I have also shared further information on YALPI below for your reference.

Should you have any inquiries, please do not hesitate to contact us at yalpichula@gmail.com. Your kind cooperation is highly appreciated.

Sincerely,

Coordinator of Human Resources Department,

Young ASEAN Leaders Policy Initiative 2025

Email: yalpichula@gmail.com

About Young ASEAN Leaders Policy Initiative (YALPI)

YALPI has been in operation since 2016, conducted annually by Chulalongkorn University undergraduate students who strive to create a platform for fruitful exchange between regional young citizens and key decision-making stakeholders from government agencies, non-governmental organizations and private institutions. Every year, YALPI has a different theme referring to the current situation that has to be figured out in terms of policy. Delegates who be selected as the representatives of youth together acknowledge and criticize YALPI theme key information of each year in Keynote sessions, understand how to initiate and develop solutions in Content discussion sessions with mentors, then come up with the policy recommendation at last which the winner’s will be handed to government agencies or non-governmental organizations or private institutions for actual implementation. To accommodate the selected delegates, YALPI also provides them with accommodation, meals (including Halal, non-Halal options and Vegan) and exciting cultural activities so that they can have the most memorable experience in the Land of Smiles.

Instagram: https://www.instagram.com/yalpi_official/

Facebook: <https://www.facebook.com/YALPIChula>

Application Form : [YALPI 2025 Delegates Recruitment form](#)

กองกลาง สำนักงานอธิการบดี
รับที่ 501197
วันที่ 9 ธ.ค. 2567
เวลา 10.49 น.

กองพัฒนภาษาและกิจการต่างประเทศ
มหาวิทยาลัยนครสวรรค์
0979
รับที่
วันที่ 6 ธ.ค. 2567 เวลา 15:10

เรียน อธิการบดี

ด้วย Young ASEAN Leaders Policy Initiative (YALPI) ขอประชาสัมพันธ์เข้าร่วมงาน 9th Young ASEAN Leaders Policy Initiative 2025 ภายใต้หัวข้อ ASEAN's Future as an AI Hub Inclusive Policies for a Thriving Digital Economy ซึ่งจะจัดขึ้นระหว่างวันที่ 4-7 กุมภาพันธ์ 2568 ณ จุฬาลงกรณ์มหาวิทยาลัย กรุงเทพมหานคร ซึ่งประกอบไปด้วยหัวข้อ Maximizing the efficiency of AI Usage และ Mitigating the Impacts of AI Usage โดยนิสิตที่เข้าร่วมกิจกรรมจะต้องมีคุณสมบัติดังต่อไปนี้

- นิสิตไทย หรือนิสิตต่างชาติที่อายุไม่เกิน 25 ปี
- กำลังศึกษาในระดับปริญญาตรี หรือสำเร็จการศึกษาในระดับ

ปริญญาตรีแล้ว

ทั้งนี้ นิสิตที่สนใจสามารถศึกษารายละเอียดและลงทะเบียนเข้าร่วมกิจกรรมได้ตั้งแต่วันนี้จนถึงวันที่ 15 ธันวาคม 2567 ตาม QR Code ที่แนบด้านล่างนี้

จึงเรียนมาเพื่อโปรดพิจารณา และเห็นควรเวียนแจ้ง คณะและวิทยาลัยเพื่อประชาสัมพันธ์ต่อไป



หิรัญ วรรณ
(นิสิตฝึกงาน)
6/12/67

ลงนาม
6 ธ.ค. 2567

6 ธ.ค. 67

ลงชื่อ

(นายจักรกฤษณ์ เพ็ญประจักษ์)

ผู้อำนวยการกองพัฒนาภาษาและกิจการต่างประเทศ

วันที่ 6 ธันวาคม 2567

- นายนันทนา
- ทวี กอมนะวัฒน์
พร. ธีระพันธ์

ลงชื่อ

(ดร.พิสุทธิ อภิขยกุล)

รองอธิการบดีฝ่ายวิเทศสัมพันธ์และการถ่ายทอดเทคโนโลยี

ปฏิบัติราชการแทน อธิการบดีมหาวิทยาลัยนเรศวร

วันที่ 9/12/67



DELEGATE RECRUITMENT 2025 NOW - 15 DEC 2024

"The international forum that aims to solve current social problems from the bottom-up"

MAIN THEME:

ASEAN's Future as an AI Hub:
Inclusive Policies for a Thriving Digital Economy



SUBTHEME:

- *Maximizing* the efficiency of AI Usage
- *Mitigating* the Impacts of AI Usage

Who can Apply:

- Thai or international youth
(*not limited to ASEAN nationals*)
- Aged under 25 years old.
- Currently an undergraduate or have graduated with a university degree.



February 4 - 7, 2025



Chulalongkorn University
Bangkok, Thailand (On-site)

**REGISTER
NOW**



ASEAN's Future as an AI Hub: Inclusive Policies for a Thriving Digital Economy

YALPI 2025 Theme

The main objective of YALPI is to create a network of young people interested in various social issues across ASEAN member countries within the border of Southeast Asian region. It also aims to encourage youth to recognize their potential to bring about change within the context of rapid technological growth, which is transforming human lifestyles. The arrival of AI undeniably has significant implications in changing human lives, especially in the economic sphere. This technology has been applied to enhance efficiency or facilitate economic activities. YALPI 2025 is committed to promoting ways to leverage AI to enhance economic potential. However, the adoption of this technology has not only brings benefits, but also impacts on humans. People may face increased risks from the changes. Therefore, YALPI 2025 also aims to seek ways to mitigate the impacts on society resulted from the AI in economic activities.

Nowadays, there are widespread trends in using AI or Artificial Intelligence technology in the economy. The advancement and proliferation of technology have become integral to people's daily lives. The changing world driven by these trends necessitates understanding the influence, benefits, and impacts of implementing AI, especially in the economic sector. The emergence and application of AI have brought substantial economic benefits and significant influence, leading to heightened awareness among both the private sector and the government sector about managing AI usage effectively. This includes implementing control measures or policies that consider those affected by AI's integration into daily life.

Meanwhile, economic growth has always been a crucial issue in the Southeast Asian region. This region has long been considered an indispensable economic base for the world. Massive investments have been continuously made in this area. Therefore, the region must always be ready to accommodate various forms of economy. Importantly, the emergence of the digital economy has transformed traditional economic practices into online economic activities. Undeniably, this presents a significant opportunity for the region to develop an environment capable of supporting the advancement of the digital economy

Building on this, YALPI 2025, under the theme "ASEAN's Future as an AI Hub: Inclusive Policies for a Thriving Digital Economy," aims to propel ASEAN towards becoming a hub for exploring ways to leverage AI to enhance economic efficiency. Simultaneously, it seeks methods to mitigate the impacts of AI implementation. This will be addressed through two main topics: "Maximizing the Efficiency of AI Usage" and "Mitigating the Impacts of AI Usage."

Sub-topic I : Maximizing the Efficiency of AI Usage

In today's rapidly evolving landscape, technology is advancing at an unprecedented rate, driving profound changes in business models and organizational structures and leading to the displacement of traditional practices. This shift impacts every sector, especially the global economy, which is increasingly transitioning to a digital economy. This digital economy—defined by the integration of digital technologies—encompasses the production, distribution, and

consumption of goods and services through digital platforms across diverse sectors, including e-commerce, digital infrastructure, and digital services. Given that information technology now plays a central role in almost every process, adapting from traditional economic structures is both essential and urgent.

As ASEAN deepens its integration with the global economy, Artificial Intelligence (AI) has emerged as a pivotal force in accelerating the region's digital economic growth. AI's advanced capabilities—such as large-scale data analysis for enhanced decision-making, algorithms for streamlined and highly personalized processes, and automation that reduces repetitive tasks—allow businesses to focus on high-value activities while minimizing human error. Although the application of AI across various sectors remains nascent and carries inherent risks, its potential benefits to the digital economy are undeniable.

The Southeast Asia Development Solutions (SEADS) underscores that AI's transformative capabilities are reshaping sectors within ASEAN's digital economy by boosting productivity and raising customer service standards. The incorporation of AI not only promotes economic growth and job creation but also shapes ASEAN's economic future, fostering innovation and efficiency across digital platforms. These developments contribute to strengthening the region's economic resilience and global competitiveness. With robust support from national governments and regional partnerships to promote AI adoption, ASEAN economies are well-positioned to become a leading digital and technological hub.

Therefore, YALPI 2025 is committed to supporting ASEAN in the strategic integration of AI within the digital economy. By fostering collaboration, YALPI 2025 creates opportunities for participants to address, exchange, and innovate on policies across multiple fields, thereby facilitating long-term, efficient AI implementation across all sectors of the digital economy. These initiatives include big data analysis, algorithm development, and AI-powered solutions designed to assist human labor, ultimately enhancing productivity and alleviating human resource burdens. Through these efforts, YALPI 2025 aims to strengthen ASEAN's capacity, preparing it to assume a leading role in the global digital economy.

Sub-topic II : Mitigating the Impacts of AI Usage

Artificial Intelligence (AI) is a technology which has a thinking and practicing process like human intelligence through the analysis of various sets of data. The technology then has applied to many sectors especially in the digital economy sector, such as AI for meeting the needs of customers personally by analyzing individual historical searching and buying. Although AI comes up with benefits on developing the digital economy abundantly, the risk from it is also high. When AI is based on various data, this may cause many problems related to the falsification of data such as the risk of intervening data privacy concern, misinformation or bias that could lead to racial discrimination, challenges on job replacing of AI on labor market, cybersecurity, economic and social inequality and AI usage on a war. These kinds of challenges have been generated due to the uniqueness and uncertainty they are. Even though we cannot detain the effects, we still can limit and control the effect from dispersion via enforcing laws. This depends on the integrity of all

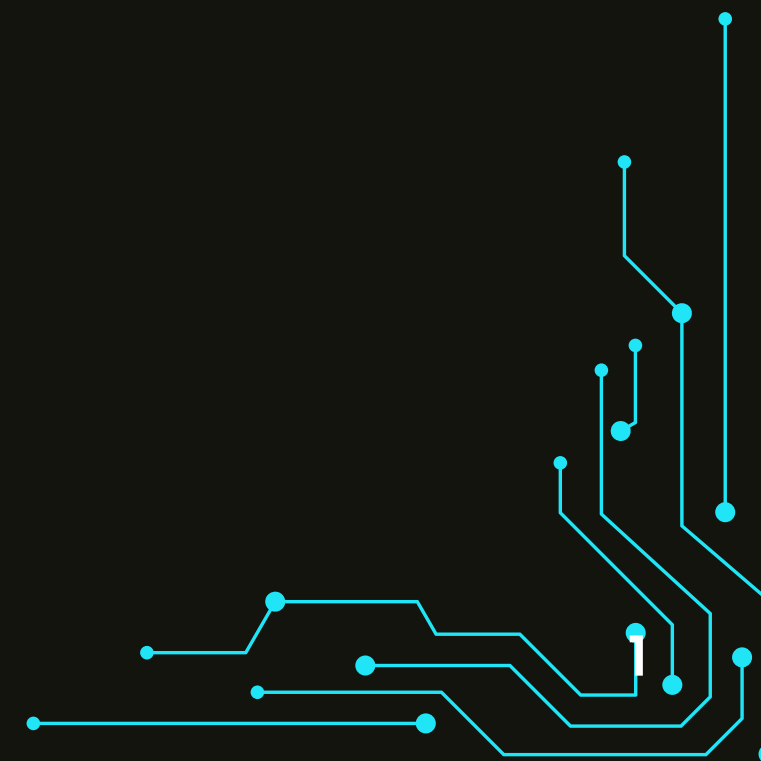
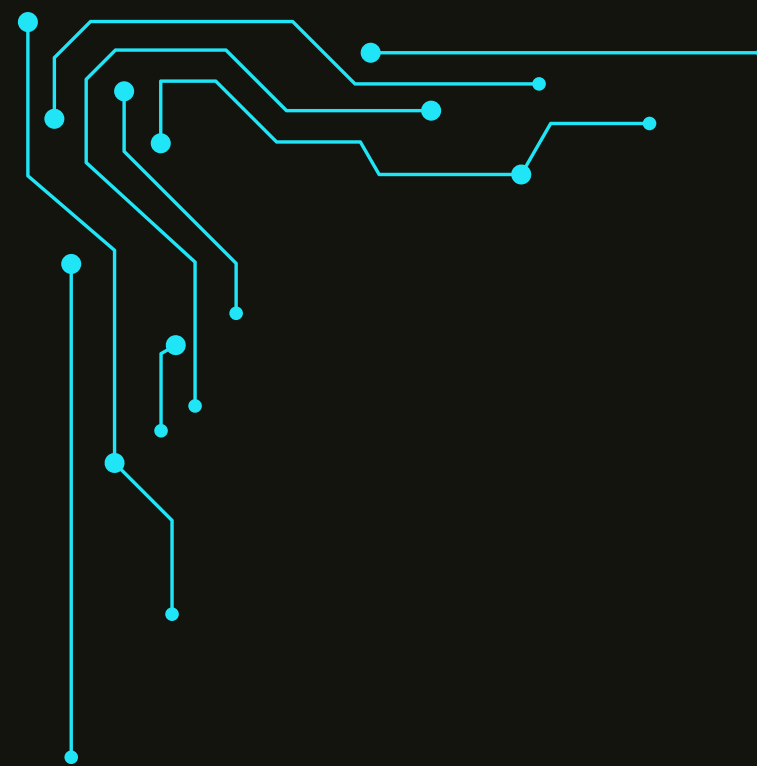
sections, even private sections, to ameliorate affected people from the ongoing process of AI development.

Thus, it is reasonable to find such approaches or policies that could mitigate the impacts of AI usage in the digital economy. Supervising and restraining issues caused by AI is considered as an effort to cope with any novel challenges. Because the issues are not concrete enough and are just a forecast of significant effects in constant future, manipulation of the issues should operate through preventative measures rather than corrective measures to avoid and relieve us from unfavorable impacts, especially in Southeast Asia that usually endorse technological advancement from outside without setting any principles. Due to the complexity of AI, if we don't detain it before the problems emerge, it will be tough to revise immediately and worthily when compared with loss of public interests. On behalf of YALPI 2025, Therefore, we desire to support the ASEAN members' youths where AI tends to be used widely, but get rid of laws, agreements or other measures to rule the ethics of AI usage, to integrate and learn about the issues and create measures to use AI ethically in resolving the problems of long-term development, and also could apply to social practice. All of this is to continue the ongoing technological development process in the digital economy sector dynamically alongside the least and preventable impacts.



YALPI 2025

Young ASEAN Leaders Policy Initiative



What is YALPI?

Yalpi is an international forum organized by students from Chulalongkorn University. Over the 8th to 9th year's, Our forum functioned as an exclusive platform, facilitating the convergence of ASEAN youth to gather, share, and exchange ideas about implementable global policies aimed at tackling multiple societal issues

YALPI's mission is also fostering and cultivating network among youth from ASEAN Countries.

Through interactive workshops organized for international delegates, we strive to enhance their skills in project management and leadership, enabling them to reach their fullest potential.



Main Theme

**ASEAN's Future as an AI Hub: Inclusive Policies
for a Thriving Digital Economy**

**อนาคตอาเซียนในฐานะศูนย์กลางการใช้ปัญญาประดิษฐ์:
นโยบายที่โอบอุ้มทุกฝ่ายเพื่อเศรษฐกิจดิจิทัลที่รุ่งโรจน์**

ASEAN's Future as an AI Hub

With our Main Theme “ASEAN's Future as an AI Hub: Inclusive Policies for a Thriving Digital Economy”, YALPI 2025 seeks **inclusive policy for AI usage in Economy**. As the Digital Economy has been thriving, society faces many challenges, including the emergence of AI.

AI has become an essential part of the economy. The usage of AI has both positive and negative effect. To implement AI effectively, the pros and cons should be considered. Therefore, leading to our inclusive policy for maximizing and mitigating the AI usage



Maximizing the efficiency of AI Usage

With our first sub-topic : **Maximizing the efficiency of AI Usage**, YALPI seeks to find policies that will enhance AI usage in the **economic sector**. Both companies and governments are ramping up efforts to harness AI's capabilities as they recognize the vast opportunities it offers.

The usage of AI helps with vast data management, prediction of certain behavior by AI algorithms, and revolutionary human resource management. Therefore, YALPI supports ethical AI implementation in the economic sector and encourages maximizing the potential with responsible AI principles.



Sub-topic I

Mitigating the Impacts of AI Usage

With our second sub-topic : **Mitigating the Impacts of AI Usage**, YALPI seeks to find policies that will relief the impact stakeholders faced. Although Artificial Intelligence (AI) was guaranteed in benefits, it also raises concerns in privacy, false information ,and job displacement.

It is important to recognize the negative impact expected from AI Usage in the economic sector. Therefore, YALPI encourages participants to find ways to construct principles on AI usage and ensure security for all the stakeholders.



Sub-topic II