

**sarunyavud kangwanwongphaisan**

**Subject:** FW: Asian Youth Leaders Elite Program 2024 (Dubai)

**From:** Secretary AYLEP <secretary@aylep.com>

**Subject:** Asian Youth Leaders Elite Program 2024 (Dubai)

**Date:** 14 March 2567 at 11:40:58 AM GMT+7

**To:** [chakritf@nu.ac.th](mailto:chakritf@nu.ac.th)



You don't often get email from [secretary@aylep.com](mailto:secretary@aylep.com). [Learn why this is important](#)

Dear Sir/Madam,

Greetings!

The application for **Asian Youth Leaders Elite Program 2024 (Summer Term)** is now open.

Asian Youth Leaders Elite Program (AYLEP) is a window for youth to explore the world, a bridge for youth to connect with each other, a platform for youth to gain fulfilling and amazing experiences from Asia to worldwide. AYLEP has benefited 22539 participants from 85 countries in the past 16 years.

**Each institution can recommend 5 students. And scholarships will be provided to those outstanding students if they are selected.**

For more information, please visit our website: [www.aylep.com](http://www.aylep.com)

Sincerely,

Fatima Khan (Ms.) & Amelia Yip (Ms.)  
Co-Directors | Executive Committee  
Asian Youth Leaders Elite Program 2024

ด้วย Ms. Fatima Khan และ Ms. Amelia Yip ตำแหน่ง Co-Directors Executive Committee ประจำปี Asian Youth Leaders Elite Program 2024 แจ้งประชาสัมพันธ์การเปิดรับสมัคร Asian Youth Leaders Elite Program 2024 ระยะเวลา 5 วัน โดยจัดใน 3 ประเทศ รายละเอียดดังนี้

- (1) ประเทศเนปาล ในระหว่างวันที่ 21- 25 ก.ค. 67
- (2) ประเทศคูเวต ในระหว่างวันที่ 4 - 8 ส.ค. 67
- (3) ประเทศเซอร์เบีย ในระหว่างวันที่ 18 - 22 ส.ค. 67

ซึ่งผู้สมัครต้องเรียงลำดับประเทศตามความต้องการ ทั้งนี้ มหาวิทยาลัยสามารถเสนอชื่อนิสิต จำนวน 5 ราย เพื่อประกอบการขอรับทุนสนับสนุน โดยการเข้าร่วมโครงการมีค่าใช้จ่ายดังนี้

- 1) ค่าสมัคร 80 ดอลลาร์สหรัฐ
- 2) ค่าธรรมเนียมโครงการ 800 ดอลลาร์สหรัฐ (แบบมีทุนสนับสนุน)

ซึ่งรวมค่าอาหารและที่พักแล้ว โดยผู้สมัครเข้าร่วมโครงการจะต้องรับผิดชอบค่าใช้จ่ายอื่นๆ เองทั้งหมด หมดเขตรับสมัครในวันที่ 15 มิ.ย. 67 โดยสามารถส่งใบสมัครผ่านอีเมล [admissions@aylep.com](mailto:admissions@aylep.com) หรือสมัครทางออนไลน์ที่ <https://www.aylep.com/online-application> สำหรับผู้ที่ประสงค์เข้าร่วมโครงการสามารถศึกษารายละเอียดเพิ่มเติมได้ที่เว็บไซต์ <https://www.aylep.com> และเอกสารแนบมาพร้อมนี้

จึงเรียนมาเพื่อโปรดพิจารณา เห็นควรเวียนแจ้งคณะ/วิทยาลัย เพื่อประชาสัมพันธ์ผ่านระบบ E-doc และประชาสัมพันธ์ผ่านเว็บไซต์ของ กองพัฒนาภาษาและกิจการต่างประเทศ และเพจ NU International Scholarships ต่อไป

ศรัทธา ออม  
18 ส.ค. 67

ลงชื่อ .....

(นายจักรกฤษณ์ เฟื่องปรารงค์)

ผู้อำนวยการกองพัฒนาภาษาและกิจการต่างประเทศ

วันที่ .....

ศรัทธา ออม  
19 สิงหาคม 2567

(รองศาสตราจารย์ ดร.อุษา พัดเกตุ)

รักษาการในตำแหน่งผู้ช่วยอธิการบดีฝ่ายต่างประเทศ

ดำเนินการตามเสนอ

อื่น ๆ .....

ลงชื่อ .....

(ดร.จรัสดาว คงเมือง)

รองอธิการบดีฝ่ายพัฒนานิสิต ศิษย์เก่า และศิลปวัฒนธรรม

ปฏิบัติราชการแทน อธิการบดีมหาวิทยาลัยนเรศวร

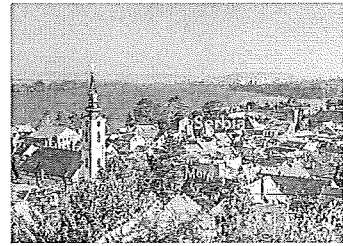
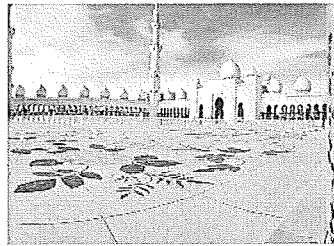
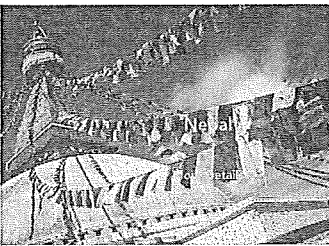
วันที่ .....



## Asian Youth Leaders Elite Program

Asian Youth Leaders Elite Program (AYLEP) is a platform for youth to gain fulfilling and amazing experiences from Asia to worldwide. AYLEP has benefited 22539 participants from 85 countries in the past 16 years.

### 2024 Summer Destination



### Our Impact

**16**  
Years

**85**  
Countries

**22539**  
Participants

### Special Thanks





### Who we are

Asian Youth Leaders Elite Program (AYLEP) is a platform for youth to gain fulfilling and amazing experiences from Asia to worldwide. AYLEP aspires to develop youth into global citizens with an understanding of the multiplicities and complexities of the world. AYLEP aims to inspire youth to appreciate and embrace colorful lives in different cultures. AYLEP hopes to nurture youth to realize and celebrate the benefits of diversity and difference.

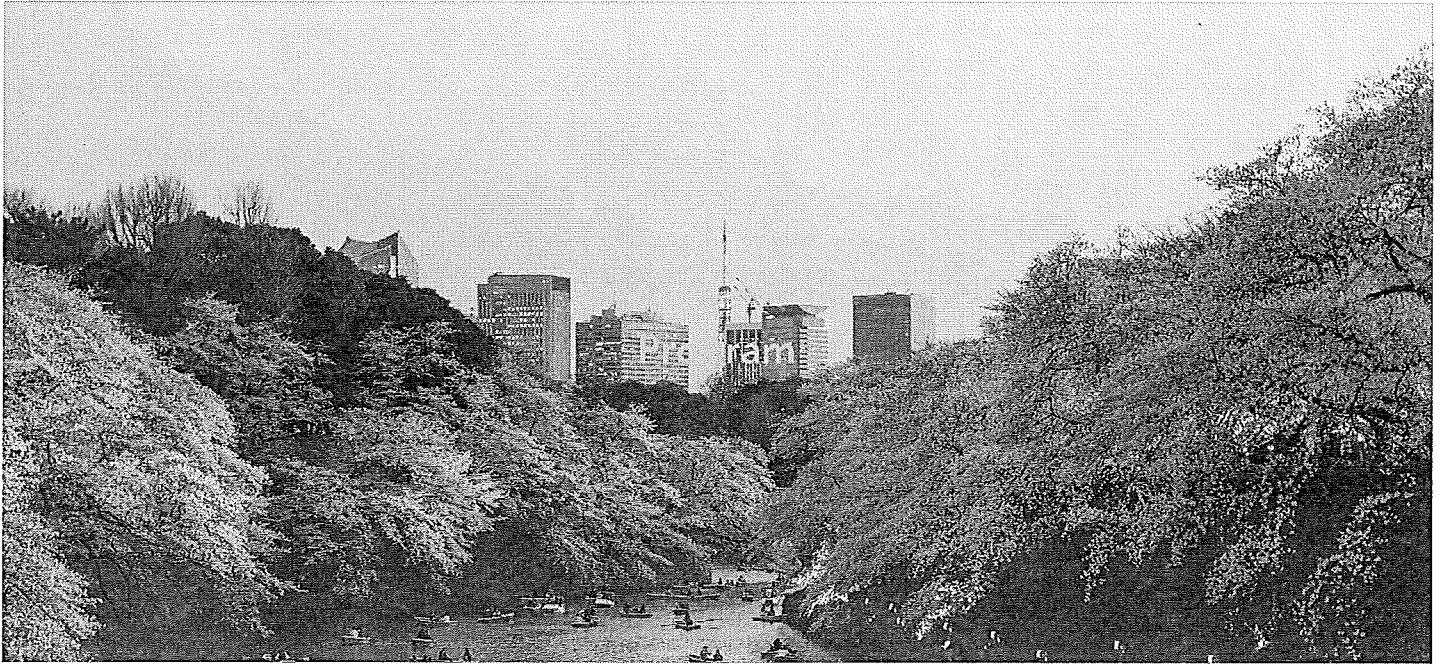
Since 2008, we have dedicated ourselves to planning programs that provide our youth with beautiful & unforgettable memories for years to come. Whichever program you choose, your experience will be intellectually fulfilling within and outside the classroom.



Sarah Brown, University of Auckland

"My experience here of studying Buddhism and Hinduism was highly inspiring. It will be so great to get back home and know something a little more about a different country."





### The Gateway to Incredible Adventures

We offer exchange, cultural, enrichment and engagement programs in different countries to enhance the transformative educational experience that will expand our youth' perspectives and set them up for success in an interconnected and globalizing world.

We also provide customized/tailored programs to universities, institutions, youth organizations and NGOs to suit their needs and goals.



[Nepal](#)



[United Arab Emirates](#)



[Serbia](#)



### Things to know before applying

#### Eligibility

- Students from high schools, colleges and universities around the world (at least 16 years old during AYLEP)
- Students who are healthy and physically capable to join lessons and activities
- Students who are comfortable to learn and work in an international environment
- Teachers/Faculty Members/Staff from high schools/colleges/universities

#### Procedure

1. Submit Online Application (button below) [QR](#) send the Application Form (below) to [admissions@aylep.com](mailto:admissions@aylep.com)
2. Pay Application Fee
3. Receive the Letter of Admission
4. Pay Program Fee
5. Apply Visa (If needed) and purchase Travel Insurance & Air Tickets
6. Receive the Handbook and embark on the journey

#### Selection

- Selection is based on the merit of each application, interview/supporting documents may be required.
- Due to the high volume of applications, we only process the application after receiving the Application Fee.
- In order to ensure the highest quality standards, a maximum of 300 participants per term will be allowed.

#### Certificate

At the end of the program, participants will receive a Certificate of Achievement.

#### Application Period (2024 Summer)

15th March to 15th June

#### Program Calendar (2024 Summer)

Nepal (21-25 July)

Dubai (4-8 August)

Serbia (18-22 August)

[Online Application](#)

[AYLEP Application Form.pdf](#)



## Payment & Scholarship

### Fees

- Application Fee: USD 80
- Program Fee (with Scholarship): USD 800
- Program Fee: USD 1500

### Fees Description

- The fees are charged per participant.
- Application Fee is the processing fee for application.
- Program Fee covers:
  - lessons, workshops, study tours
  - teamwork course, leadership training
  - 4 nights' accommodation
  - 4 days' breakfast, 3 days' lunch, 1 formal dinner
  - airport pick-up and drop-off
  - local transportation between program sessions
  - teaching and administrative materials

*The fee excludes air tickets, visa (if needed), travel insurance and all personal expenses.*

### Scholarship

- Scholarship will be granted automatically to students from the member universities of Asian Universities Alliance/ASEAN University Network/The Association of Commonwealth Universities/The Association of Pacific Rim Universities if they are selected.
- Scholarship will also be awarded to outstanding applicants from non-member universities if they are selected.
- Scholarship application is submitted together with the application form. The scholarship approval will be stated in the Letter of Admission.

### Payment Method

- Online Payment (Paypal/Credit Card/Debit Card) (Click the buttons below)
- Bank Transfer (Please contact Admissions Officer at [admissions@aylep.com](mailto:admissions@aylep.com) for bank details)

### Refund Policy

- Application Fee will be refunded if the Selection Committee rejects the application. Otherwise, Application Fee is non-refundable.
- All withdrawals before 45 days from (exclude day 45, UTC+8 Time Zone) the start date of the program with valid reasons, 50% of the program fee (actual paid) will be refunded. The program fee (actual paid) is non-refundable if the participant withdraws within 45 days from the program start date.

*Kindly note the receiving bank may deduct an administrative fee from the refund amount.*

### Application Fee:

Please click the button below to make the application fee payment. Your application will only be processed upon receiving the application fee.



### Program Fee (with Scholarship):

Please click the button below to make the program fee payment. Participants should only pay the program fee AFTER receiving the Letter of Admission.



### Program Fee:

Please click the button below to make the program fee payment. Participants should only pay the program fee AFTER receiving the Letter of Admission.





## Useful Information

### Visa

- Participants must carry a valid passport with at least 6 months' validity.
- Citizens of certain countries do require a Visa to visit our host countries.
- Participant is responsible for applying and obtaining his/her own Visa if needed.

### Transportation

Local transportation will be provided between program sessions (lessons, workshops, study tours, teamwork course and leadership training). Participant needs to arrange his/her own arrival and departure to/from the host city.

### Accommodation

4 nights' accommodation will be arranged for all participants. The room is on a twin-sharing basis. If you reach the host city before our program or you want to make an extension after our program, you need to make your own hotel arrangement.

### Food

4 Breakfast +3 lunch (Day 2, 3 & 4) + 1 formal dinner will be provided for all participants. For other meals not covered, participants can eat at the canteen/food hall/restaurant in the city or hotel.

### Itinerary

The program's itinerary may be subject to change. Participants will receive a handbook with detailed itinerary 2 weeks before the program.

### Travel Insurance

All participants are required to purchase Travel Insurance before coming to the host countries. The travel insurance should cover but not limited by:

1. Lost or Damaged Luggage
2. Sudden Trip Cancellation
3. Personal Accident Coverage
4. Medical Expenses and Emergency
5. Travel Delay not caused by you (including natural disasters)





We look forward to embarking AYLEP journey together with you!

## CONTACT US

*Please send an email directly to us if you do not receive a reply  
within 1 working day after submitting the contact form.*

[registrar@aylep.com](mailto:registrar@aylep.com) (General Inquiry)

[admissions@aylep.com](mailto:admissions@aylep.com) (Admissions & Scholarship)

Name \*

Enter your name

Email \*

Enter your email

Subject

Type the subject

Message

Type your message here...

Submit