



บันทึกข้อความ

ส่วนราชการ กองพัฒนาภาษาและกิจการต่างประเทศ งานส่งเสริมความร่วมมือระหว่างประเทศ โทร. 1644

ที่ อว 0603.01.11(1)/0548

วันที่ 15 ธันวาคม 2566

เรื่อง ประชาสัมพันธ์โครงการแลกเปลี่ยนนิสิตระยะสั้น ณ Tehran University of Medical Sciences และโครงการฝึกปฏิบัติงาน Taiwan Experience Education Program (TEEP) ณ มหาวิทยาลัยในไต้หวัน

เรียน อธิการบดี

ตามที่ ศาสตราจารย์ ดร.กรรณก อิงคินันท์ รองอธิการบดีฝ่ายพัฒนางานวิจัยและนวัตกรรม และผู้ช่วยศาสตราจารย์ ดร.อุทัย วิชัย รองอธิการบดีฝ่ายยุทธศาสตร์ เป็นผู้แทนมหาวิทยาลัยเข้าร่วมการประชุมทางวิชาการ ASAHIL Conference 2023 ในหัวข้อ International Cooperation toward Excellence in Training and Research ระหว่างวันที่ 5 – 9 ธันวาคม 2566 ณ University of Science and Technology of Hanoi ประเทศเวียดนาม ความทราบแล้ว นั้น

ทั้งนี้ จากการเข้าร่วมประชุมดังกล่าวข้างต้นร่วมกับมหาวิทยาลัยเครือข่ายในต่างประเทศ ภายใต้สมาชิกองค์กร ASAHIL ได้มีการนำเสนอโครงการแลกเปลี่ยนนิสิตและโครงการอื่นๆ ที่น่าสนใจจากหลากหลายมหาวิทยาลัยในต่างประเทศ ซึ่งเป็นข้อมูลที่เป็นประโยชน์และสมควรเผยแพร่ให้กับบุคลากรและนิสิตมหาวิทยาลัยนเรศวรผู้สนใจเข้าร่วมโครงการหรือแสวงหาแหล่งทุนต่อไป

ในการนี้ กองพัฒนาภาษาและกิจการต่างประเทศ จึงใคร่ขอเผยแพร่ข้อมูลโครงการดังกล่าวข้างต้นรายละเอียด ดังนี้

1. โครงการแลกเปลี่ยนนิสิตระยะสั้น ภายใต้โครงการ “TUMS International Winter School 2024” ณ Tehran University of Medical Sciences ประเทศอิหร่าน ระยะเวลา 1 สัปดาห์ โดยมี 4 วิทยาลัยนำเสนอกิจกรรมภายใต้โครงการฯ ข้างต้น ได้แก่
 - Medicine Winter School 2024 วันที่ 27 มกราคม – 1 กุมภาพันธ์ 2567
 - Pharmacy Winter School 2024 วันที่ 27 มกราคม – 1 กุมภาพันธ์ 2567
 - Persian Medicine Winter 2024 วันที่ 27 มกราคม – 1 กุมภาพันธ์ 2567
 - Dentistry Winter School 2024 วันที่ 3 - 7 กุมภาพันธ์ 2567

โดยมีค่าใช้จ่ายในการเข้าร่วมโครงการ ได้แก่

1.1 ค่าลงทะเบียนเข้าร่วมโครงการ (รวมอาหารเช้าและอาหารกลางวัน)

จำนวน 200 ดอลลาร์สหรัฐ (USD)

1.2 ค่าที่พัก จำนวน 50 ดอลลาร์สหรัฐ (USD)

1.3 ไม่มีค่าใช้จ่ายการรับ-ส่งสนามบิน

ทั้งนี้ นิสิตผู้สนใจสามารถศึกษารายละเอียดเพิ่มเติมได้ที่

<https://en.tums.ac.ir/en/content/1162/tums-international-winter-school-2024> และ <https://en.tums.ac.ir/en> และสมัครเข้าร่วมโครงการได้ที่

<https://en.tums.ac.ir/en/content/380/apply-to-tums> ภายในวันที่ 10 มกราคม 2567 รายละเอียดดังเอกสารแนบ 1

2. โครงการฝึกปฏิบัติงาน Taiwan Experience Education Program (TEEP) ณ มหาวิทยาลัย
ไต้หวัน โดยมีสาขาที่เกี่ยวข้อง จำนวน 8 สาขาวิชา ดังนี้

- 2.1 Agriculture & Fishery
- 2.2 Business & Management
- 2.3 Engineering
- 2.4 Natural Science
- 2.5 Culture & Humanity
- 2.6 Social Science
- 2.7 Medicine & Public Health
- 2.8 Others

ทั้งนี้ นิสิตผู้สนใจเข้าร่วมโครงการสามารถขอสมัครรับทุนการศึกษาเป็น
ค่าใช้จ่ายรายเดือน (Stipend) ได้ในแต่ละสาขาวิชา จำนวนสูงสุด 15,000 ดอลลาร์
ไต้หวัน (NTD)/เดือน โดยนิสิตผู้สนใจสามารถศึกษารายละเอียดเพิ่มเติมได้ที่
<https://teep.studyintaiwan.org/> รายละเอียดดังเอกสารแนบ 2

จึงเรียนมาเพื่อโปรดพิจารณา เห็นควรเวียนแจ้งกลุ่มคณะวิทยาศาสตร์สุขภาพ สำหรับ
โครงการในลำดับที่ 1 และเวียนแจ้งทุกคณะ/วิทยาลัย สำหรับโครงการในลำดับที่ 2 เพื่อประชาสัมพันธ์
ผ่านระบบ E-doc เว็บไซต์กองพัฒนาภาษาและกิจการต่างประเทศ เพจกองพัฒนาภาษาและกิจการ
ต่างประเทศ และเพจ NU International Scholarships ต่อไป

(นายจักรกฤษณ์ เฟื่องปรารักษ์)

ผู้อำนวยการกองพัฒนาภาษาและกิจการต่างประเทศ


18 ธันวาคม ๒๕๖๒

(รองศาสตราจารย์ ดร.อุษา พัดเกตุ)

รักษาการในตำแหน่งผู้อำนวยการบดีฝ่ายต่างประเทศ

๒๖๓๒๑๕๓๐

(ดร.พิสุทธิ์ อภิขยกุล)

รองอธิการบดีฝ่ายวิเทศสัมพันธ์และการถ่ายทอดเทคโนโลยี

ปฏิบัติราชการแทน อธิการบดีมหาวิทยาลัยนครสวรรค์


๒๐/๑๒/๖๒

TUMS International Winter School 2024



(<https://en.tums.ac.ir/en/content/380/apply-to-tums>)

TUMS International Winter School 2024

TUMS International Winter School 2024 is offered in 4 schools in collaboration with research centers.

School of Medicine	
School of Pharmacy	School of Dentistry
School of Persian Medicine	<u>03 – 07 February</u>
<u>27 January – 01 February</u>	

Fee Structure	Expenses for One-Week Package/ USD
Tuition Fee (Breakfast & Lunch included)	200
Accommodation	50
Airport transfer	Free

Registration is NOW open

The application deadline is 10 January 2024

Apply online, request scholarship and get more information about the courses at <https://en.tums.ac.ir/en> (<https://en.tums.ac.ir/en>) or simply scan the QR CODE

INQUARIES

IVR.: (+9821) 8891 2090-93

Tel.: (+9821) 8891 2096

Admission: admission@tums.ac.ir (<mailto:admission@Tums.ac.ir>)

Marketing: marketing-gsia@tums.ac.ir (<mailto:marketing-gsia@tums.ac.ir>)

No. 21, Dameshq St., Vali-e Asr Ave., Tehran 1416753955, Iran



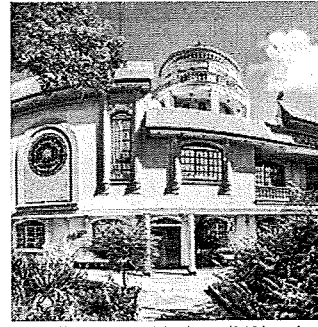
(<https://en.tums.ac.ir/en/page/849/medicine-winter-school-2024>)



(<https://en.tums.ac.ir/en/page/847/pharmac-winter-school-2024>)



(<https://en.tums.ac.ir/en/page/850/dentistry-winter-school-2024>)



(<https://en.tums.ac.ir/en/page/848/persian-medicine-winter-school-2024>)

Medicine Winter School
2024

(<https://en.tums.ac.ir/en/page/winter-school-2024>)

Pharmacy Winter School
2024

(<https://en.tums.ac.ir/en/page/winter-school-2024>)

Dentistry Winter School
2024

(<https://en.tums.ac.ir/en/page/winter-school-2024>)

Persian Medicine Winter
School 2024

(<https://en.tums.ac.ir/en/page/medicine-winter-school-2024>)

Schools

[School of Medicine \(/en/content/74/school-of-medicine\)](/en/content/74/school-of-medicine)

[School of Dentistry \(/en/content/232/school-of-dentistry\)](/en/content/232/school-of-dentistry)

[School of Pharmacy \(/en/content/235/school-of-pharmacy\)](/en/content/235/school-of-pharmacy)

[School of Public Health \(/en/content/236/school-of-public-health\)](/en/content/236/school-of-public-health)

[School of Rehabilitation \(/en/content/237/school-of-rehabilitation\)](/en/content/237/school-of-rehabilitation)

[School of Persian Medicine \(/en/content/238/school-of-persian-medicine\)](/en/content/238/school-of-persian-medicine)

[School of Nursing and Midwifery \(/en/content/233/school-of-nursing-amp-midwifery\)](/en/content/233/school-of-nursing-amp-midwifery)

[School of Allied Medical Sciences \(/en/content/231/school-of-allied-medical-sciences\)](/en/content/231/school-of-allied-medical-sciences)

[School of Nutritional Sciences Dietetics \(/en/content/234/school-of-nutritional-sciences-amp-dietetics\)](/en/content/234/school-of-nutritional-sciences-amp-dietetics)

[School of Advanced Technologies in Medicine \(/en/content/230/school-of-advanced-technologies-in-medicine\)](/en/content/230/school-of-advanced-technologies-in-medicine)

[International Campus \(/en/content/758/international-campus\)](/en/content/758/international-campus)

International Branches

[Subtain University \(https://subtain.university/\)](https://subtain.university/)

[Kish Campus \(https://en.tums.ac.ir/kish/en\)](https://en.tums.ac.ir/kish/en)

Research Centers

[Cancer Institute \(/en/page/56/cancer-institute\)](/en/page/56/cancer-institute)

[Tehran Heart Center \(/en/page/148/tehran-heart-center\)](/en/page/148/tehran-heart-center)

[Eye Research Center \(/en/page/60/eye-research-center\)](/en/page/60/eye-research-center)

[Rheumatology Research Center \(/en/page/63/rheumatology-research-center\)](/en/page/63/rheumatology-research-center)

[Bullous Disease Research Center \(/en/page/153/bullous-disease-research-center\)](/en/page/153/bullous-disease-research-center)

[Sports Medicine Research Center \(/en/page/244/sports-medicine-research-center\)](/en/page/244/sports-medicine-research-center)

[Multiple Sclerosis Research Center \(/en/page/149/multiple-sclerosis-research-center\)](/en/page/149/multiple-sclerosis-research-center)

[Digestive Diseases Research Center \(/en/page/152/digestive-diseases-research-center\)](/en/page/152/digestive-diseases-research-center)

[Research Center for Nuclear Medicine \(/en/page/62/research-center-for-nuclear-medicine\)](/en/page/62/research-center-for-nuclear-medicine)

[Research Center for Immunodeficiencies \(/en/page/57/research-center-for-immunodeficiencies\)](/en/page/57/research-center-for-immunodeficiencies)

[The Institute of Pharmaceutical Sciences \(/en/page/58/the-institute-of-pharmaceutical-sciences\)](/en/page/58/the-institute-of-pharmaceutical-sciences)

[Pediatric Infectious Diseases Research Center \(/en/page/55/pediatric-infectious-diseases-research-center-pidrc-\)](/en/page/55/pediatric-infectious-diseases-research-center-pidrc-)

[More \(http://en.tums.ac.ir/en/grid/preview/27/tums-research-centers\)](http://en.tums.ac.ir/en/grid/preview/27/tums-research-centers)

Hospitals

[Dental Clinic \(http://en.tums.ac.ir/en/page/563/dental-clinic\)](http://en.tums.ac.ir/en/page/563/dental-clinic)

[Sina hospital \(/en/page/119/sina-hospital\)](/en/page/119/sina-hospital)

[Razi Hospital \(/en/page/106/razi-hospital\)](/en/page/106/razi-hospital)

[Farabi Hospital \(/en/page/97/farabi-hospital\)](/en/page/97/farabi-hospital)

[Ziaeian Hospital \(/en/page/112/ziaeian-hospital\)](/en/page/112/ziaeian-hospital)

[Shariati Hospital \(/en/page/126/shariati-hospital\)](/en/page/126/shariati-hospital)

[Roozbeh Hospital \(/en/page/107/roozbeh-hospital\)](/en/page/107/roozbeh-hospital)

[Baharloo Hospital \(/en/page/100/baharloo-hospital\)](/en/page/100/baharloo-hospital)

[Amir A'lam Hospital \(/en/page/96/amir-a-lam-hospital\)](/en/page/96/amir-a-lam-hospital)

[Yas women Hospital \(/en/page/111/yas-women-hospital\)](/en/page/111/yas-women-hospital)

[Arash Women's Hospital \(/en/page/99/arash-women-s-hospital\)](/en/page/99/arash-women-s-hospital)

[Bahrami Children's Hospital \(/en/page/101/bahrami-children-s-hospital\)](/en/page/101/bahrami-children-s-hospital)

[Tehran Heart Center Hospital \(/en/page/110/tehran-heart-center-hospital\)](/en/page/110/tehran-heart-center-hospital)


Imam Khomeini Hospital Complex (/en/page/105/imam-khomeini-hospital-complex)

Children's Medical Center Hospital (/en/page/103/children-s-medical-center-hospital)

© Copyright ©2019 tums.ac.ir All Rights Reserved.



Medicine-Winter School 2024



visits:54 



27 January – 01 February 2024

Date	8:00-8:30	Training Session 8:30-10:00	10:00- 10:30	Training Session 10:30- 12:00	12:00- 14:00	Training Session 14:00-16:00
Sat. Jan 27 th	Welcoming session at int. affairs	General Surgery Sina Hosp. (Dr. Abdolrazaghi)	Coffee Break	General Surgery Sina Hosp. (Dr. Abdolrazaghi)	Lunch	-

Sun. Jan 28 th	Introduction & Breakfast	ENT Amiralam Hosp. (Dr. Alesaeedi)	Coffee Break	ENT Amiralam Hosp. (Dr. Alesaeedi)	Lunch	-
Mon. Jan 29 th	Introduction & Breakfast	Nuclear Medicine Imam Khomeini Hosp. (Dr. Abbasi)	Coffee Break	Nuclear Medicine Imam Khomeini Hosp. (Dr. Abbasi)	Lunch	Medical Education (Dr. Alizadeh)
Tue. Jan 30 th	Introduction & Breakfast	Cardiology Tehran Heart Center Hosp. (Dr. Jenab)	Coffee Break	Cardiology Tehran Heart Center Hosp. (Dr. Jenab)	Lunch	Digital Health (Dr. Shariat)
Wed. Jan 31 th	Introduction & Breakfast	Dermatology Razi Hosp. (Dr. Etesami)	Coffee Break	Dermatology Razi Hosp. (Dr. Etesami)	Closing Ceremony and lunch	
Thur. Feb 1st	Iranology – College					

Share:  Telegram  WhatsApp (<https://web.whatsapp.com/send?text=https://en.tums.ac.ir/en/page/849/medicine-winter-school-2024>)

Last Update At : 03 December 2023

Schools

School of Medicine (</en/content/74/school-of-medicine>)

School of Dentistry (</en/content/232/school-of-dentistry>)

School of Pharmacy (</en/content/235/school-of-pharmacy>)

School of Public Health (</en/content/236/school-of-public-health>)

School of Rehabilitation (</en/content/237/school-of-rehabilitation>)

School of Persian Medicine (</en/content/238/school-of-persian-medicine>)

[School of Nursing and Midwifery \(/en/content/233/school-of-nursing-amp-midwifery\)](/en/content/233/school-of-nursing-amp-midwifery)

[School of Allied Medical Sciences \(/en/content/231/school-of-allied-medical-sciences\)](/en/content/231/school-of-allied-medical-sciences)

[School of Nutritional Sciences Dietetics \(/en/content/234/school-of-nutritional-sciences-amp-dietetics\)](/en/content/234/school-of-nutritional-sciences-amp-dietetics)

[School of Advanced Technologies in Medicine \(/en/content/230/school-of-advanced-technologies-in-medicine\)](/en/content/230/school-of-advanced-technologies-in-medicine)

[International Campus \(/en/content/758/international-campus\)](/en/content/758/international-campus)

International Branches

[Subtain University \(https://subtain.university/\)](https://subtain.university/)

[Kish Campus \(https://en.tums.ac.ir/kish/en\)](https://en.tums.ac.ir/kish/en)

Research Centers

[Cancer Institute \(/en/page/56/cancer-institute\)](/en/page/56/cancer-institute)

[Tehran Heart Center \(/en/page/148/tehran-heart-center\)](/en/page/148/tehran-heart-center)

[Eye Research Center \(/en/page/60/eye-research-center\)](/en/page/60/eye-research-center)

[Rheumatology Research Center \(/en/page/63/rheumatology-research-center\)](/en/page/63/rheumatology-research-center)

[Bullous Disease Research Center \(/en/page/153/bullous-disease-research-center\)](/en/page/153/bullous-disease-research-center)

[Sports Medicine Research Center \(/en/page/244/sports-medicine-research-center\)](/en/page/244/sports-medicine-research-center)

[Multiple Sclerosis Research Center \(/en/page/149/multiple-sclerosis-research-center\)](/en/page/149/multiple-sclerosis-research-center)

[Digestive Diseases Research Center \(/en/page/152/digestive-diseases-research-center\)](/en/page/152/digestive-diseases-research-center)

[Research Center for Nuclear Medicine \(/en/page/62/research-center-for-nuclear-medicine\)](/en/page/62/research-center-for-nuclear-medicine)

[Research Center for Immunodeficiencies \(/en/page/57/research-center-for-immunodeficiencies\)](/en/page/57/research-center-for-immunodeficiencies)

[The Institute of Pharmaceutical Sciences \(/en/page/58/the-institute-of-pharmaceutical-sciences\)](/en/page/58/the-institute-of-pharmaceutical-sciences)

[Pediatric Infectious Diseases Research Center \(/en/page/55/pediatric-infectious-diseases-research-center-pidrc-\)](/en/page/55/pediatric-infectious-diseases-research-center-pidrc-)

[More \(http://en.tums.ac.ir/en/grid/preview/27/tums-research-centers\)](http://en.tums.ac.ir/en/grid/preview/27/tums-research-centers)

Hospitals

[Dental Clinic \(http://en.tums.ac.ir/en/page/563/dental-clinic\)](http://en.tums.ac.ir/en/page/563/dental-clinic)

[Sina hospital \(/en/page/119/sina-hospital\)](/en/page/119/sina-hospital)

[Razi Hospital \(/en/page/106/razi-hospital\)](/en/page/106/razi-hospital)
[Farabi Hospital \(/en/page/97/farabi-hospital\)](/en/page/97/farabi-hospital)
[Ziaeian Hospital \(/en/page/112/ziaeian-hospital\)](/en/page/112/ziaeian-hospital)
[Shariati Hospital \(/en/page/126/shariati-hospital\)](/en/page/126/shariati-hospital)
[Roozbeh Hospital \(/en/page/107/roozbeh-hospital\)](/en/page/107/roozbeh-hospital)
[Baharloo Hospital \(/en/page/100/baharloo-hospital\)](/en/page/100/baharloo-hospital)
[Amir A'lam Hospital \(/en/page/96/amir-a-lam-hospital\)](/en/page/96/amir-a-lam-hospital)
[Yas women Hospital \(/en/page/111/yas-women-hospital\)](/en/page/111/yas-women-hospital)
[Arash Women's Hospital \(/en/page/99/arash-women-s-hospital\)](/en/page/99/arash-women-s-hospital)
[Bahrami Children's Hospital \(/en/page/101/bahrami-children-s-hospital\)](/en/page/101/bahrami-children-s-hospital)
[Tehran Heart Center Hospital \(/en/page/110/tehran-heart-center-hospital\)](/en/page/110/tehran-heart-center-hospital)
[Imam Khomeini Hospital Complex \(/en/page/105/imam-khomeini-hospital-complex\)](/en/page/105/imam-khomeini-hospital-complex)
[Children's Medical Center Hospital \(/en/page/103/children-s-medical-center-hospital\)](/en/page/103/children-s-medical-center-hospital)

Pharmacy Winter School 2024



visits:23 ↗



27 January – 01 February 2024

Date	8:00 – 8:30	8:30 – 10:00	10:00-10:30	10:30- 12:00	12:00-14:00	14:00-16:00
Sat- 27 Jan	Welcome session in int. affairs	Introduction of faculty of pharmacy (TUMS) + Pharmacotherapy Practice in Iran	Coffee break	AI in Pharmacy	Lunch	-

Sun- 28 Jan	Introduction and Coffee break	The role of Pharmacoeconomics in Pharmaceutical Practices	Coffee break	Vaccinology	Lunch	-
Mon- 29 Jan	Introduction and Coffee break	Application of Medicinal Chemistry in Pharmacy Industry	Coffee break	Bioconjugation in Drug Delivery	Lunch	-
Tue – 30 Jan	Introduction and Coffee break	Industrial Enzymes	Coffee break	An Introduction to Radiopharmacy	Lunch	-
Wed – 31 Jan	Introduction and Coffee break	ICU round in Sina Hospital	Coffee break	ICU round in Sina Hospital	Closing Ceremony and lunch	
Thur- 1 Feb	Iranology – TUMS College					

Share:  Telegram  WhatsApp (<https://web.whatsapp.com/send?text=https://en.tums.ac.ir/en/page/847/pharmacy-winter-school-2024>)

Last Update At : 29 November 2023

Schools

School of Medicine (</en/content/74/school-of-medicine>)

School of Dentistry (</en/content/232/school-of-dentistry>)

School of Pharmacy (</en/content/235/school-of-pharmacy>)

School of Public Health (</en/content/236/school-of-public-health>)

School of Rehabilitation (</en/content/237/school-of-rehabilitation>)

School of Persian Medicine (</en/content/238/school-of-persian-medicine>)

School of Nursing and Midwifery (</en/content/233/school-of-nursing-amp-midwifery>)

School of Allied Medical Sciences (</en/content/231/school-of-allied-medical-sciences>)

School of Nutritional Sciences Dietetics (</en/content/234/school-of-nutritional-sciences-amp-dietetics>)

School of Advanced Technologies in Medicine (</en/content/230/school-of-advanced-technologies-in-medicine>)

International Campus (</en/content/758/international-campus>)

International Branches

Subtain University (<https://subtain.university/>)

Kish Campus (<https://en.tums.ac.ir/kish/en>)

Research Centers

Cancer Institute (</en/page/56/cancer-institute>)

Tehran Heart Center (</en/page/148/tehran-heart-center>)

Eye Research Center (</en/page/60/eye-research-center>)

Rheumatology Research Center (</en/page/63/rheumatology-research-center>)

Bullous Disease Research Center (</en/page/153/bullous-disease-research-center>)

Sports Medicine Research Center (</en/page/244/sports-medicine-research-center>)

Multiple Sclerosis Research Center (</en/page/149/multiple-sclerosis-research-center>)

Digestive Diseases Research Center (</en/page/152/digestive-diseases-research-center>)

Research Center for Nuclear Medicine (</en/page/62/research-center-for-nuclear-medicine>)

Research Center for Immunodeficiencies (</en/page/57/research-center-for-immunodeficiencies>)

The Institute of Pharmaceutical Sciences (</en/page/58/the-institute-of-pharmaceutical-sciences>)

Pediatric Infectious Diseases Research Center (</en/page/55/pediatric-infectious-diseases-research-center-pidrc->)

More (<http://en.tums.ac.ir/en/grid/preview/27/tums-research-centers>)

Hospitals

Dental Clinic (<http://en.tums.ac.ir/en/page/563/dental-clinic>)

Sina hospital (</en/page/119/sina-hospital>)

Razi Hospital (</en/page/106/razi-hospital>)

Farabi Hospital (</en/page/97/farabi-hospital>)

Ziaeeian Hospital (</en/page/112/ziaeeian-hospital>)

Shariati Hospital (</en/page/126/shariati-hospital>)

Roozbeh Hospital (</en/page/107/roozbeh-hospital>)

Baharloo Hospital (</en/page/100/baharloo-hospital>)

Amir A'lam Hospital (</en/page/96/amir-a-lam-hospital>)

Yas women Hospital (</en/page/111/yas-women-hospital>)

[Arash Women's Hospital \(/en/page/99/arash-women-s-hospital\)](/en/page/99/arash-women-s-hospital)

[Bahrami Children's Hospital \(/en/page/101/bahrami-children-s-hospital\)](/en/page/101/bahrami-children-s-hospital)

[Tehran Heart Center Hospital \(/en/page/110/tehran-heart-center-hospital\)](/en/page/110/tehran-heart-center-hospital)

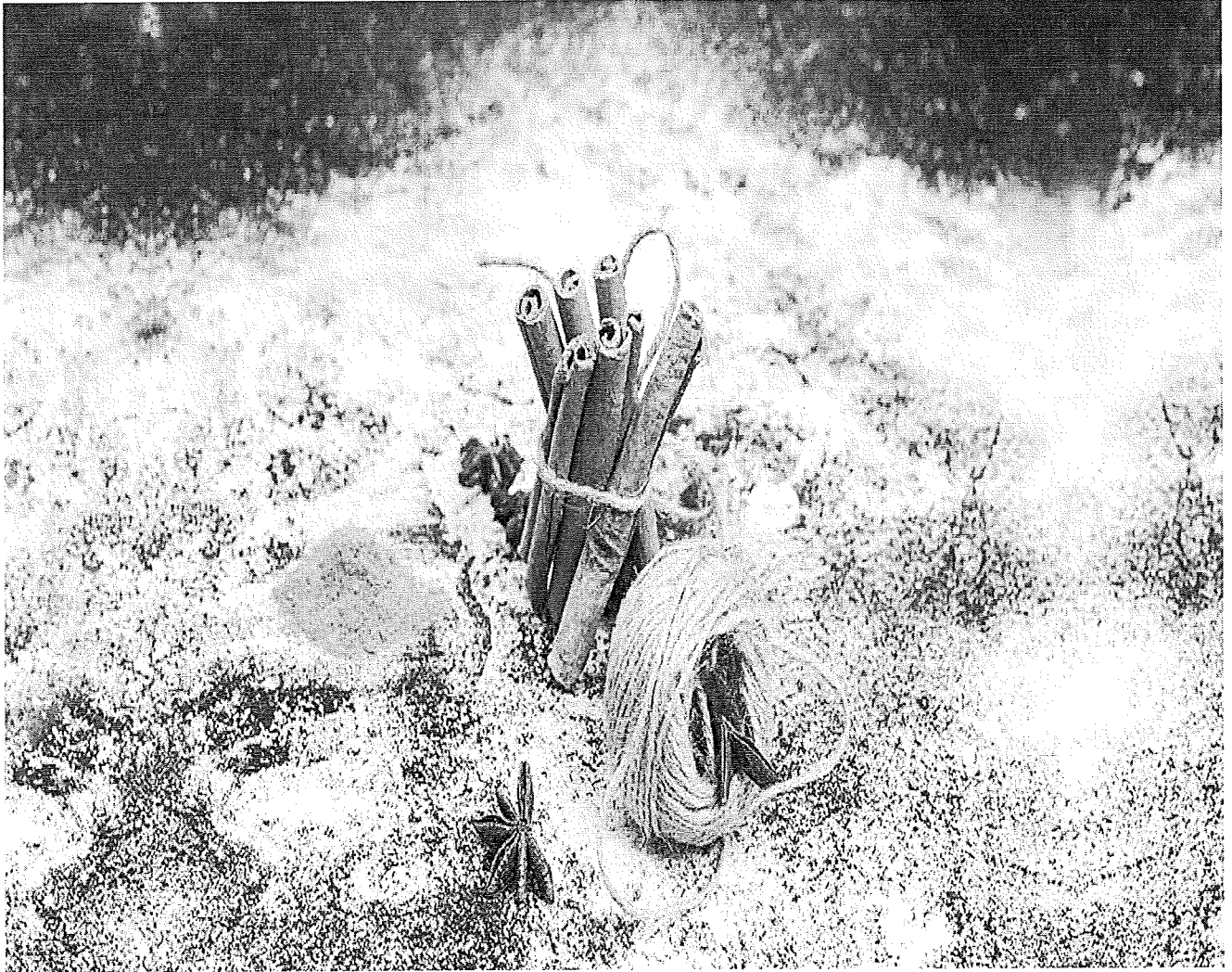
[Imam Khomeini Hospital Complex \(/en/page/105/imam-khomeini-hospital-complex\)](/en/page/105/imam-khomeini-hospital-complex)

[Children's Medical Center Hospital \(/en/page/103/children-s-medical-center-hospital\)](/en/page/103/children-s-medical-center-hospital)

© Copyright ©2019 tums.ac.ir All Rights Reserved.

Persian Medicine Winter school 2024


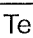
visits:28 ↗



27 January – 01 February 2024

Date	8:00 – 8:30	8:30 – 10:00	10:00-10:30	10:30- 12:00	12:00-14:00	14:00-16:00
Sat – 27 Jan	Welcome session in int. affairs	An introduction into Persian Medicine	Coffee break	Complementary and alternative medicine around the world	Lunch	-

Sun- 28 Jan	Introduction and Coffee break	History of Medicine	Coffee break	Laboratory: Preparation of medicinal foods	Lunch	-
Mon- 29 Jan	Introduction and Coffee break	Skin care and cosmetics in Persian Medicine	Coffee break	Laboratory: preparation of cosmetic products	Lunch	-
Tue – 30 Jan	Introduction and Coffee break	Integrative oncology	Coffee break	Clinic: Manual therapies (massage, dry cupping, wet cupping)	Lunch	-
Wed – 31 Jan	Introduction and Coffee break	Plant systematics and Herbarium	Coffee break	Common medicinal plants as home remedies	Closing Ceremony and lunch	
Thur- 01 February	Iranology – College					

Share:  Telegram  WhatsApp (<https://web.whatsapp.com/send?text=https://en.tums.ac.ir/en/page/848/persian-medicine-winter-school-2024>)

Last Update At : 29 November 2023

Schools

School of Medicine (</en/content/74/school-of-medicine>)

School of Dentistry (</en/content/232/school-of-dentistry>)

School of Pharmacy (</en/content/235/school-of-pharmacy>)

School of Public Health (</en/content/236/school-of-public-health>)

School of Rehabilitation (</en/content/237/school-of-rehabilitation>)

School of Persian Medicine (</en/content/238/school-of-persian-medicine>)

School of Nursing and Midwifery (</en/content/233/school-of-nursing-amp-midwifery>)

School of Allied Medical Sciences (</en/content/231/school-of-allied-medical-sciences>)

School of Nutritional Sciences Dietetics (</en/content/234/school-of-nutritional-sciences-amp-dietetics>)

School of Advanced Technologies in Medicine (</en/content/230/school-of-advanced-technologies-in-medicine>)

International Campus (</en/content/758/international-campus>)

International Branches

Subtain University (<https://subtain.university/>)

Kish Campus (<https://en.tums.ac.ir/kish/en>)

Research Centers

Cancer Institute (</en/page/56/cancer-institute>)

Tehran Heart Center (</en/page/148/tehran-heart-center>)

Eye Research Center (</en/page/60/eye-research-center>)

Rheumatology Research Center (</en/page/63/rheumatology-research-center>)

Bullous Disease Research Center (</en/page/153/bullous-disease-research-center>)

Sports Medicine Research Center (</en/page/244/sports-medicine-research-center>)

Multiple Sclerosis Research Center (</en/page/149/multiple-sclerosis-research-center>)

Digestive Diseases Research Center (</en/page/152/digestive-diseases-research-center>)

Research Center for Nuclear Medicine (</en/page/62/research-center-for-nuclear-medicine>)

Research Center for Immunodeficiencies (</en/page/57/research-center-for-immunodeficiencies>)

The Institute of Pharmaceutical Sciences (</en/page/58/the-institute-of-pharmaceutical-sciences>)

Pediatric Infectious Diseases Research Center (</en/page/55/pediatric-infectious-diseases-research-center-pidrc->)

More (<http://en.tums.ac.ir/en/grid/preview/27/tums-research-centers>)

Hospitals

Dental Clinic (<http://en.tums.ac.ir/en/page/563/dental-clinic>)

Sina hospital (</en/page/119/sina-hospital>)

Razi Hospital (</en/page/106/razi-hospital>)

Farabi Hospital (</en/page/97/farabi-hospital>)

Ziaeeian Hospital (</en/page/112/ziaeeian-hospital>)

Shariati Hospital (</en/page/126/shariati-hospital>)

[Roozbeh Hospital \(/en/page/107/roozbeh-hospital\)](/en/page/107/roozbeh-hospital)

[Baharloo Hospital \(/en/page/100/baharloo-hospital\)](/en/page/100/baharloo-hospital)

[Amir A'lam Hospital \(/en/page/96/amir-a-lam-hospital\)](/en/page/96/amir-a-lam-hospital)

[Yas women Hospital \(/en/page/111/yas-women-hospital\)](/en/page/111/yas-women-hospital)

[Arash Women's Hospital \(/en/page/99/arash-women-s-hospital\)](/en/page/99/arash-women-s-hospital)

[Bahrami Children's Hospital \(/en/page/101/bahrami-children-s-hospital\)](/en/page/101/bahrami-children-s-hospital)

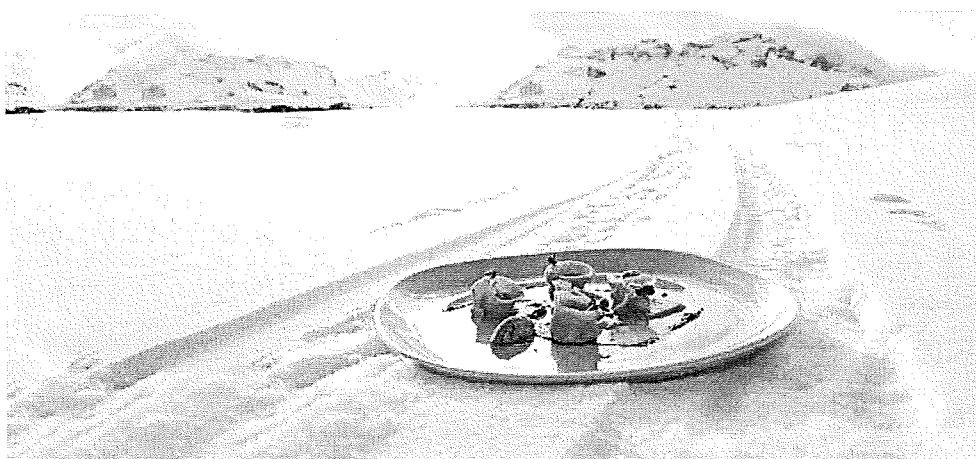
[Tehran Heart Center Hospital \(/en/page/110/tehran-heart-center-hospital\)](/en/page/110/tehran-heart-center-hospital)

[Imam Khomeini Hospital Complex \(/en/page/105/imam-khomeini-hospital-complex\)](/en/page/105/imam-khomeini-hospital-complex)

[Children's Medical Center Hospital \(/en/page/103/children-s-medical-center-hospital\)](/en/page/103/children-s-medical-center-hospital)

Dentistry Winter School 2024

visits:26 ↗



February 03 – February 07 2024

Date	8:00 – 8:30	8:30 – 10:00	10:00-10:30	10:30- 12:00	12:00-14:00	14:00- 16:00	Extraordinary program
Sat – 3 Feb	Welcome session in int. affairs	Periodontics (http://dentistry.tums.ac.ir/en/facultymember/periodontics)	Coffee break	Periodontics (http://dentistry.tums.ac.ir/en/facultymember/periodontics)	Lunch	Community Oral Health (http://dentistry.tums.ac.ir/en/facultymember/communityoralhealth)	-
Sun- 4 Feb	Introduction and Coffee break	Pediatric Dentistry (http://dentistry.tums.ac.ir/en/facultymember/pediatricdentistry)	Coffee break	Restorative Dentistry	Lunch	Oral and Maxillofacial Pathology (http://dentistry.tums.ac.ir/en/facultymember/oralmaxillofacialpathology)	-
Mon- 5 Feb	Introduction and Coffee break	Prosthodontics (http://dentistry.tums.ac.ir/en/facultymember/prosthodontics)	Coffee break	Prosthodontics (http://dentistry.tums.ac.ir/en/facultymember/prosthodontics)	Lunch	culture visiting	culture visiting
Tue – 6 Feb	Introduction and Coffee break	Endodontics	Coffee break	Endodontics	Lunch	Orthodontics (http://dentistry.tums.ac.ir/en/facultymember/orthodontics)	-
Wed – 7 Feb	Introduction and Coffee break	Oral and Maxillofacial Surgery (http://dentistry.tums.ac.ir/en/facultymember/oralmaxillofacialsurgery)	Coffee break	Oral and Maxillofacial Surgery (http://dentistry.tums.ac.ir/en/facultymember/oralmaxillofacialsurgery)	Closing Ceremony and lunch		-

Share: Telegram WhatsApp (<https://web.whatsapp.com/send?text=https://en.tums.ac.ir/en/page/850/dentistry-winter-school-2024>)

Last Update At : 29 November 2023

Schools

- [School of Medicine \(/en/content/74/school-of-medicine\)](#)
- [School of Dentistry \(/en/content/232/school-of-dentistry\)](#)
- [School of Pharmacy \(/en/content/235/school-of-pharmacy\)](#)
- [School of Public Health \(/en/content/236/school-of-public-health\)](#)
- [School of Rehabilitation \(/en/content/237/school-of-rehabilitation\)](#)
- [School of Persian Medicine \(/en/content/238/school-of-persian-medicine\)](#)
- [School of Nursing and Midwifery \(/en/content/233/school-of-nursing-amp-midwifery\)](#)
- [School of Allied Medical Sciences \(/en/content/231/school-of-allied-medical-sciences\)](#)
- [School of Nutritional Sciences Diabetics \(/en/content/234/school-of-nutritional-sciences-amp-dietetics\)](#)
- [School of Advanced Technologies in Medicina \(/en/content/230/school-of-advanced-technologies-in-medicina\)](#)
- [International Campus \(/en/content/758/international-campus\)](#)

International Branches

- [Subtain University \(https://subtain.university/\)](https://subtain.university/)
- [Kish Campus \(https://en.tums.ac.ir/kish/en\)](https://en.tums.ac.ir/kish/en)

Research Centers

- [Cancer Institute \(/en/page/56/cancer-institute\)](#)
- [Tehran Heart Center \(/en/page/148/tehran-heart-center\)](#)
- [Eye Research Center \(/en/page/60/eye-research-center\)](#)
- [Rheumatology Research Center \(/en/page/83/rheumatology-research-center\)](#)
- [Bullous Disease Research Center \(/en/page/153/bullous-disease-research-center\)](#)
- [Sports Medicine Research Center \(/en/page/244/sports-medicine-research-center\)](#)
- [Multiple Sclerosis Research Center \(/en/page/149/multiple-sclerosis-research-center\)](#)
- [Digestive Diseases Research Center \(/en/page/152/digestive-diseases-research-center\)](#)
- [Research Center for Nuclear Medicine \(/en/page/82/research-center-for-nuclear-medicine\)](#)
- [Research Center for Immunodeficiencies \(/en/page/57/research-center-for-immunodeficiencies\)](#)
- [The Institute of Pharmaceutical Sciences \(/en/page/58/the-institute-of-pharmaceutical-sciences\)](#)
- [Pediatric Infectious Diseases Research Center \(/en/page/55/pediatric-infectious-diseases-research-center-pidrc-\)](#)
- [More \(<http://en.tums.ac.ir/en/grid/preview/27/tums-research-centers>\)](#)

Hospitals

Dental Clinic (<http://en.tums.ac.ir/en/page/563/dental-clinic>)

Sina Hospital ([/en/page/119/sina-hospital](http://en.tums.ac.ir/en/page/119/sina-hospital))

Razi Hospital ([/en/page/106/razi-hospital](http://en.tums.ac.ir/en/page/106/razi-hospital))

Farabi Hospital ([/en/page/97/farabi-hospital](http://en.tums.ac.ir/en/page/97/farabi-hospital))

Ziaei Hospital ([/en/page/112/ziaei-hospital](http://en.tums.ac.ir/en/page/112/ziaei-hospital))

Shariati Hospital ([/en/page/126/shariati-hospital](http://en.tums.ac.ir/en/page/126/shariati-hospital))

Roozbeh Hospital ([/en/page/107/roozbeh-hospital](http://en.tums.ac.ir/en/page/107/roozbeh-hospital))

Baharloo Hospital ([/en/page/100/baharloo-hospital](http://en.tums.ac.ir/en/page/100/baharloo-hospital))

Amir A'lam Hospital ([/en/page/96/amir-a-lam-hospital](http://en.tums.ac.ir/en/page/96/amir-a-lam-hospital))

Yas women Hospital ([/en/page/111/yas-women-hospital](http://en.tums.ac.ir/en/page/111/yas-women-hospital))

Arash Women's Hospital ([/en/page/99/arash-women-s-hospital](http://en.tums.ac.ir/en/page/99/arash-women-s-hospital))

Bahrami Children's Hospital ([/en/page/101/bahrami-children-s-hospital](http://en.tums.ac.ir/en/page/101/bahrami-children-s-hospital))

Tehran Heart Center Hospital ([/en/page/110/tehran-heart-center-hospital](http://en.tums.ac.ir/en/page/110/tehran-heart-center-hospital))

Imam Khomeini Hospital Complex ([/en/page/105/imam-khomeini-hospital-complex](http://en.tums.ac.ir/en/page/105/imam-khomeini-hospital-complex))

Children's Medical Center Hospital ([/en/page/103/children-s-medical-center-hospital](http://en.tums.ac.ir/en/page/103/children-s-medical-center-hospital))